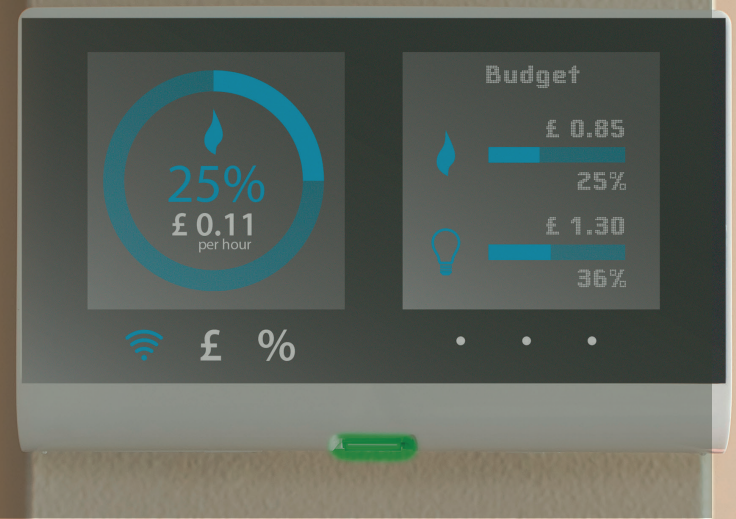


# Are you, or someone you know, struggling with the rise in the cost of living?



We can help, please contact us or the relevant agency as soon as possible.

## Cost of living support & advice (Council Tax, housing, benefits and food banks)

### Customer Service Team

- 📞 01664 502502
- ✉️ Contactus@melton.gov.uk
- 📍 Melton Borough Council,  
Parkside, Station Approach,  
Burton Street, Melton Mowbray, Leics,  
LE13 1GH

### Community Support Hub

- 📞 01664 502342
- ✉️ Here4melton@melton.gov.uk
- 📍 Phoenix House, Nottingham Road,  
Melton Mowbray, Leics,  
LE13 0UL

## Heating costs

- 📞 **NEA - Action for Warm Homes**  
0800 304 7159
- 📞 **Citizens Advice Leicestershire**  
0808 2787854

## Rent or mortgage payments

You should speak to your landlord or mortgage lender to discuss your options.

If you are a Melton Borough Council tenant your Housing Officer should be able to offer advice and support.

## Pension credit or financial support

- 📞 **Citizens Advice Leicestershire**  
0808 2787854
- 📞 **Pension Service helpline**  
0800 731 0469

## Mental health support

- 📞 Call NHS on 111
- 📞 **Mental Health Central Access Point**  
0808 800 3302 (24/7) (freephone)



[www.melton.gov.uk/costofliving](http://www.melton.gov.uk/costofliving)